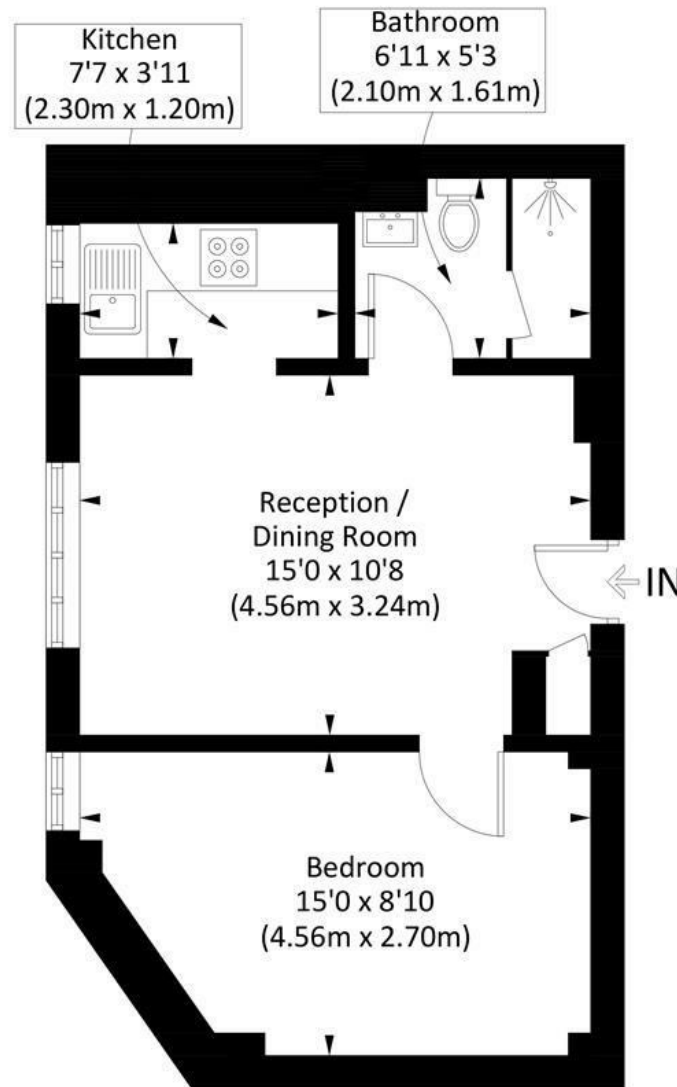


## HARWOOD COURT, SW15

Approx. gross internal area 358 Sq Ft. / 33.3 Sq M



### Ground Floor (358 Sq Ft.)

Illustration for identification purposes only, measurements are approximate, not to scale. Ffourlabs.co © 2024 (ID1149160)

**DISCLAIMER**•These particulars are intended to give a fair and substantially correct overall description for the guidance of intending purchasers and do not constitute an offer or part of a contract. Prospective purchasers and/or lessees ought to seek their own professional advice.  
 •All descriptions, dimensions, areas, references to condition and necessary permissions for use and occupation and other details are given in good faith and are believed to be correct, but any intending purchasers should not rely on them as statements or representations of fact, but must satisfy themselves by inspection or otherwise as to the correctness of each of them.  
 •All measurements are approximate.

## Harwood Court, Putney, SW15

A completely refurbished one bedroom apartment on the ground floor of this popular purpose built block in the heart of Putney. Offered on a part furnished or unfurnished basis and benefiting from wood floors and use of a communal lawn, the accommodation comprises a bright reception room, brand new kitchen, spacious double bedroom and modern shower room. Harwood Court is well located within walking distance of Putney High Street, the mainline and underground stations. The heating and hot water is also included in the rent. Available now.



- GROUND FLOOR FLAT
- KITCHEN
- BATHROOM
- COMMUNAL LAWN
- EPC C
- RECEPTION ROOM
- DOUBLE BEDROOM
- WOOD FLOORS
- HEATING & HOT WATER INCLUDED
- COUNCIL TAX BAND B

Per Calendar Month  
**£1,550 Per Calendar Month**



